



function	model	PS-X3116D
Product attributes		
Video format	CIF	FD1/CIF
Video input	16 channels	16 channels
Video output	HDMI/VGA/CVBS	HDMI/VGA/CVBS
Audio input		
Audio output		
Voice chat	support (Multiplexing with audio input ch1)	
HDD port	SATAx1	SATAx1
Alarm input		
Alarm output		
Multi-playback	16 channels	4 channels
DVD Burner (USB external CD writer)	support	support
RS-485 (half-duplex)		
RS232	Not Support	Not Support
eSATA	Not Support	Not Support

Video output description:

- 1) HDMI, VGA, and CVBS output simultaneous.
- 2) Choose VGA when booting:HDMI and VGA is homologous output as a main output port (output video and menu),CVBS is auxiliary output video and OSD;Choose CVBS when booting:CVBS is main output port (output video and menu),HDMI and VGA is auxiliary output video and OSD.



cautions

- Don't touch the power switch or the DVR by wet hands.
- Make sure the machine and its case are grounded(There is an earth interface on the back panel of the machine).
- Keep the power supplier stable to avoid abnormal power cut off.
- Avoid dropping liquid or metal into machine that may cause short circuit or fire.
- Don't record or playback until at least one HDD is installed.
- Short circuit would happen when moist dust is on the board, so user has to meticulously brush the board and other accessories to make the machine work in good condition.
- Video/audio/RS485 devices cannot be plugged or drawn when the power is on, or else the equipment will be easily damaged.
- Use the power on/off button on the front panel instead of directly huffing off the power directly when turning off the DVR, so that the hard disk won't be damaged.
- DVR can scan the entered HDD automatically, if the HDD is the new one that is not formatted by DVR, the system will prompt users to format. (system can support formatting, it will not depend on PC).
- Warning: Don't try to plug in HDD to PC if not specialized persons, the following operation of HDD on PC will cause HDD can't be recognized and need format when plug in at next time:
 1. modify or edit the file name.
 2. open the file and edit the content.
 3. copy back the data which copied out before to HDD again.
 4. Some third party browser software will also change HDD physical storage location in the background.
- In order to keep the integrity of the records, damaged disks should be exchanged promptly. (There is information about the error of the disk in the logbook.)
- When connected to the network or HDMI, please use network cable or HDMI cable with magnetic ring.

1.Package Checking

After opening the box, please check the host computer whether it is distorted or mangled. If there have, please don't use it and contact your suppliers in time. Meanwhile, please check all accessories of the host computer; do read the attached information carefully. (Notes: Accessories as for the packing list)

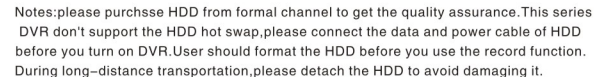
2.Steps of hard disk installation



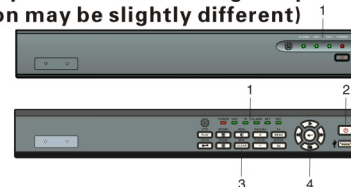
Step 1: Put HDD in the case (as pic. shown), SATA port face to inward and put case (with HDD) bottom up.

Step 3: Connect HDD power cable and data cable, pls note that the directivity of cable.

Step 2:Aiming the screw hole in HDD bottom and positioning hole in case bottom,use 3 screws to fix.



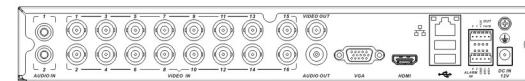
3.The front panel schematic diagram(panel physical key position may be slightly different)



SN	functionarea	functioninstruction
1	status guiding light	Including status guiding light,network guiding light,alarm guiding light and record guiding light in chief
2	power key	This key is used for closing down or starting DVR.The intimation of closing down or not appears when press this key under the power on status.Need to press this key to the start DVR under the manual closing down status
3	function area	Operate common use functions,suchasmenu,playback, picture swift, focaldistance,lock,clearing,returnetc
4	controlling function	Control up,down,left,right and speed forward,speed backward,frame forward of playback

4.The back panel instructions of DVR

PS-X3116D



5.Power on/off and login/lock

Power on: After connected up the power cable, the front panel of the DVR will start and enter the standby state. Click the "power" button on the remote controller for 3 seconds to enter the running state.

Power off:When the system is under the running state and logged in,click power button on the remote controller to popup the shut down interface.After clicked the “confirm” button,the system will enter the standby state.

Login/Lock : To avoid unauthorized user using the machine and influence the normal work of the system,we specially setting the keystroke lock and unlock function for the machine.



When the system is in the status of locking "■", Press the "●●" button on the remote controller for about 1 second, the fig of login will appear as follows :

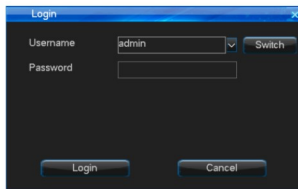
Input user name and password on the login port(distribute in authority in advance),after you input correct user name and password and press "login", the sign "■" on the lower left corner will switch to "■", automatically, and show the user name of current user. Then you can carry on the operations in the authority to the system at the moment.

1、Default User : admin, Default password : 888888 ;

2、When you input the incorrect password 3 times continuously, the system will alarm and get into the status of locking automatically. In that case, you need to click the "clear" on the remote controller to retype the password ;

3、To input name and password, you can left click mouse. It will pop out software keyboard. Right click mouse to quit.

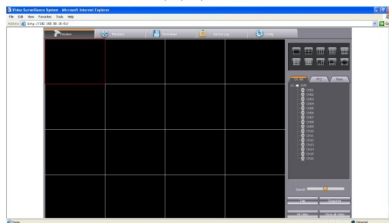
Note : For the sake of safety, please change the default password immediately.



6.WEB instructions

The preview method in WAN is same with in LAN. LAN Configuration for IE Browse:

- [1]. "Ping" the host IP first to confirm if the DVR is connected.
 - [2]. Input the address of the host to access the equipment in the IE browser
http://device host IP: 81, and then enter to connect, after a successful connection click "download activeX" to download, and running it. The default of IE access port is 81, the standard IE address is http://host IP:port when change to other port.
 - [3]. Refresh the browser, enter your user name and password to login in the login box.
- If login is successful, the interface will pop up as follows.



Digital Video Recorder

Fast Operation Guide

★ Main Functions

- Support SMTP and Email linkage.
- Support output VGA and BNC(CVBS), HDMI at the same time.
- Support fast CD/DVD burner.
- Support preview channel order adjustable, irregular split screen and sequence.
- Support the HDD dormancy & read-write setting.
- Support clipping backup while playback.
- Support recording files lock/unlock/delete.
- Support HDD Group, each channel can be assigned with their own storage HDD.
- Support 4 types recording: Manual, Schedule, Motion, Alarm; Motion detection continuous alarm.
- Support pre-record and record duration.
- Support record inquiry and playback with player. (the player can be hidden or displayed)
- Support 4 mask area setting, support 4 special interested area simultaneously.
- Support PTZ, serial keyboard and transparent controlling.
- Support DDNS, 3G or PPPOE and auto connect function.
- Support UPNP.
- Remote set para., update, preview, VOC and backup the DVR recording file.
- Support Web Server function.