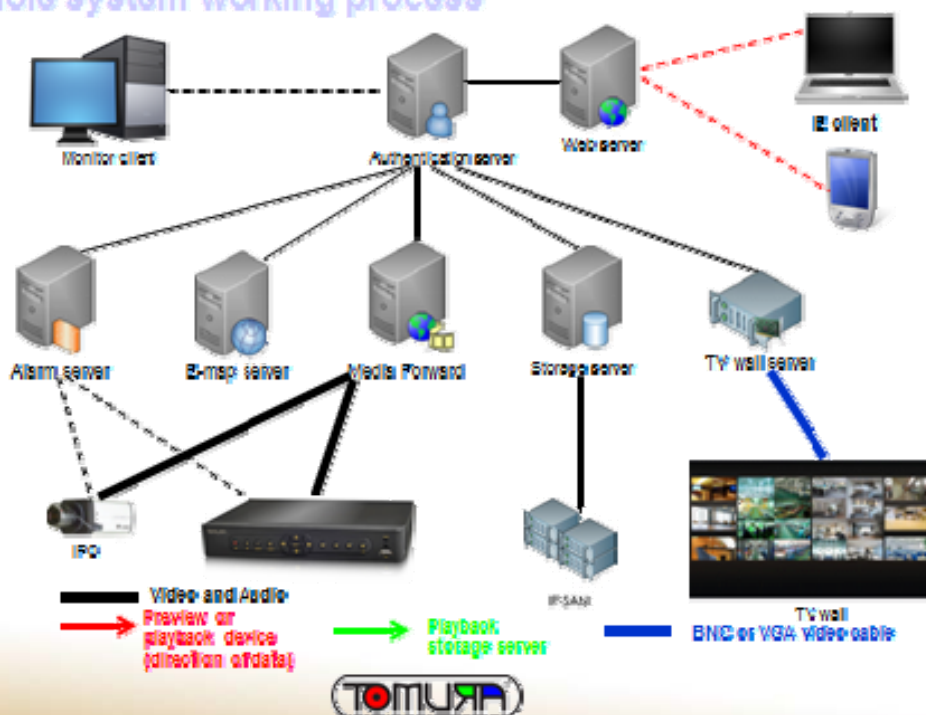


### Features

1. CMS live preview 100/256CH picture/Page; Page sequence; Unlimited Device;
2. Unlimited Group of device by hierarchy;
3. Local Record: Main/Sub Stream according to DVR transmission.
4. Event process reminder function for sensor alarm, when start CMS, if there is sensor alarm event, it will pop up reminder window automatically;
5. E-map device list interface, you can see all device channel and sensor;
6. CMS add multi layer E-map; E-map pop-up, record, Sound if alarm ;
7. when PC is under multiple display mode, CMS will only display E-map on screen A, when channel happen alarm and trigger E-map channel blinking, screen B can operate live preview for this channel, then screen A E-map alarm channel will stop blinking;
8. After start software, preview those channels saved last time when exit;
9. Heartbeat detection when playback to keep network connection is OK;
10. Advanced record schedule setup; HDD Recycle Record; Search & Edit record file function by local and remotely;
11. Parallel / period Video Backup;
12. Live/Playback snapshot and print out with name tag;
13. Export and import local configuration function; Export local log function;
14. Multiple languages according PC;
15. CMS Server's user Authorization;
16. Remote upgrade software/Kernel; Remote DVR's configuration;
17. Select on/off for processing sensor alarm and/or motion detection event;
18. Supporting Series9 DVR and some IP device;
19. Resume Windows login after System Auto Restart;

### Whole system working process



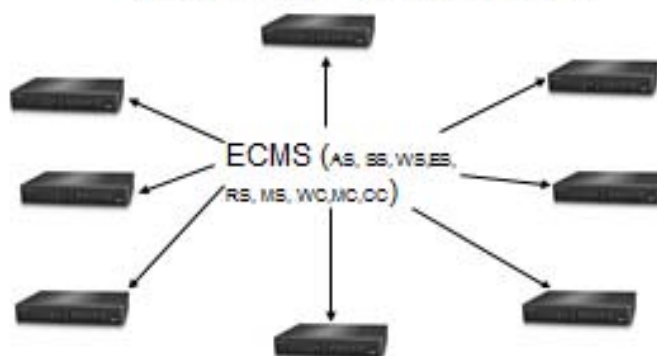
### Standard CMS VS Enterprise CMS

Item	ECMS	CMS
Properties	Enterprise	Standalone version
Maximum access channel	30000CH	200~256CH
Surveillance mode	Centralized①,cascade②,distributed③ and remotely monitoring	center, remotely monitoring
Stability	server mode, support startup server automatic start software, timing maintenance④	No
Video quality	Stream media forward server, video more fluent⑤	No
Item	ECMS	CMS
Access method	C/S,B/S,C/S support multi-screen display	standalone on PC
TV Wall	support	no
Record storage	storage server or IP-SAN①	no

### CMS and ECMS working mode



All CMS system are independent



One ECMS system can manage all device



PC Specs recommended :

- CPU : XEON 3330 2.66G qualcore quad-core 8M
- Motherboard : Intel 3200 + ICH7R
- Memeory : 2×2GB DDR3 ECC
- HDD : 500GB SATA
- Ethernet card : 1000M (If connected with multi providers, multi cards required)

Server Software Environment

Authentication\Media Transfer\Storage\Alarm Server is recommended to installed with below systems :

- OS : Windows Server 2003
- Anti-Virus software

Client Software Environment

TV-wall server and client is recommended to installed with :

- OS : Windows XP SP3 or above
- Browser : IE7、IE8
- Anti-Virus software

Router:

Supports two-way forwarding

## System Architecture

